



1424 Cast Iron Gate Valve

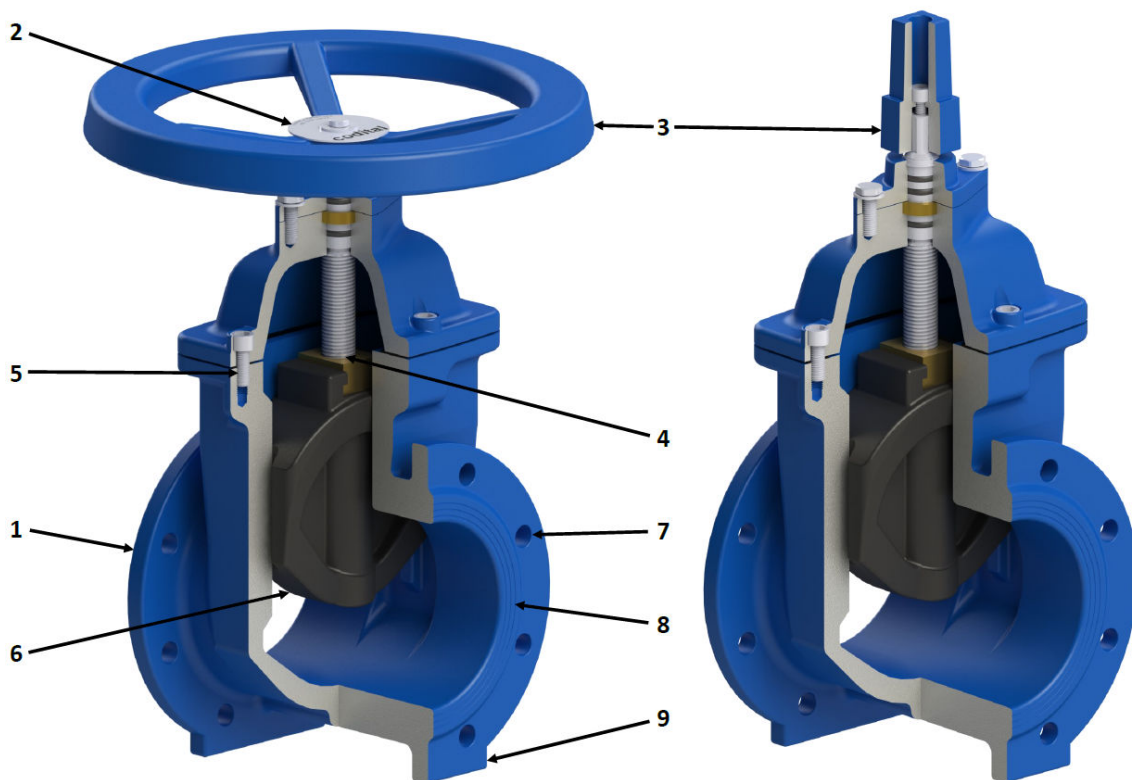
CAST IRON GATE VALVE, FLANGED ENDS PN10/16,
METAL/EPDM SEAL.
TECHNICAL DATA SHEET

Overview

- Applications : Drinking water supply, water treatment, sewerage system, irrigation.
- Fluids : Drinking water, glycol water, non-aggressive fluids.
- Pressure : PN 10/16 bar according to the size.
- Temperature : 0 / +80°C.
- CE : According to 2014/68/EU directive.

Technical Features

1. Ductile iron GGG-45 body + blue epoxy coating.
2. Nameplate with total traceability : PN, DN, batch number (manufacturing date) and CE logos.
3. Ductile iron handwheel or operating cap : clockwise close.
4. Stainless steel worm drive system. Non-rising stem.
5. Anticorrosive wax on bolts.
6. EPDM guided gate, negligible friction, minimum operating torque.
7. Flange ends PN 10/16 according to EN 1092-2 standard (adaptable to DIN2533 up to DN150).
8. Standard face-to-face design according to DIN 3202-F4.
9. Storage and mounting support.



www.orseal.com



01204 474300

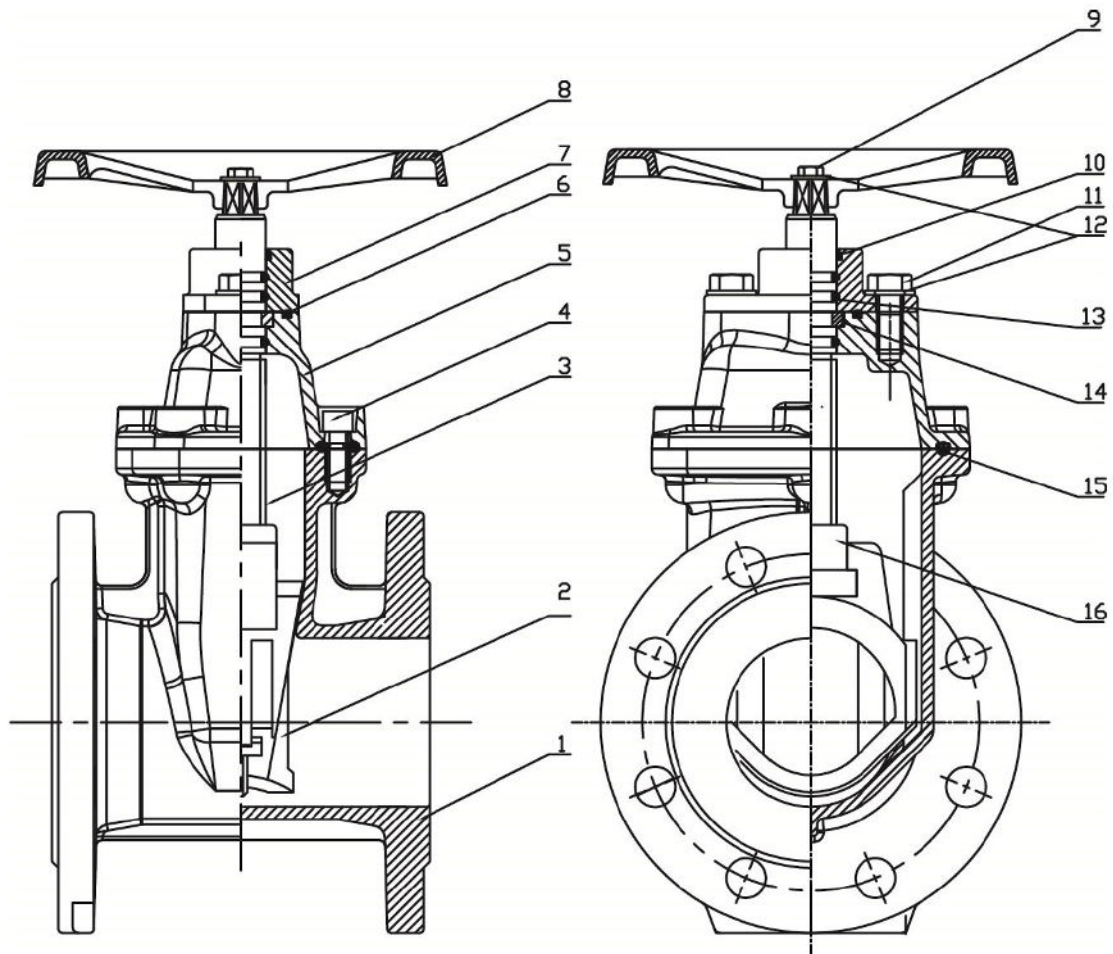
Orseal Ltd, Lynstock Way, Lostock, Bolton, Lancashire, BL6 4QR



1424 Cast Iron Gate Valve

CAST IRON GATE VALVE, FLANGED ENDS PN10/16,
METAL/EPDM SEAL.

TECHNICAL DATA SHEET



No	Description	Material
1	Body	Ductile Iron GGG-45 blue epoxy coating.
2	Gate	Ductile Iron GGG-45 + EPDM
3	Stem	Stainless Steel 420
4	Screw	Steel + Zinc coating
5	Middle hood	Ductile Iron GGG-45 blue epoxy coating.
6	Hood O'Ring	NBR
7	Top hood	Ductile Iron GGG-45 blue epoxy coating.
8	Handwheel	Ductile Iron GGG-45 blue epoxy coating.
9	Screw	Steel + Zinc coating
10	Plug	EPDM
11	Screw	Steel + Zinc coating
12	Washer	Steel + Zinc coating
13	Stem O'Ring	NBR
14	Stop ring	Brass
15	Body Gasket	EPDM
16	Nut	Brass



www.orseal.com



01204 474300

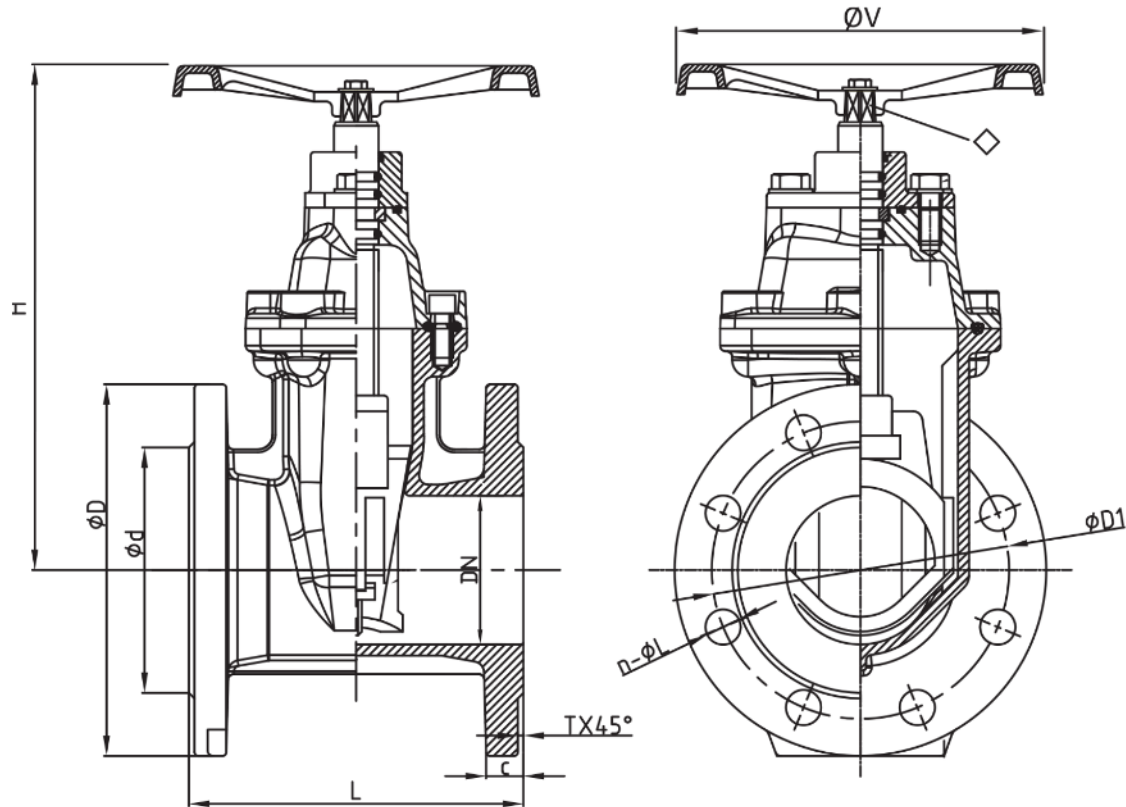
Orseal Ltd, Lynstock Way, Lostock, Bolton, Lancashire, BL6 4QR



1424 Cast Iron Gate Valve

CAST IRON GATE VALVE, FLANGED ENDS PN10/16,
METAL/EPDM SEAL.

TECHNICAL DATA SHEET



DN	GN	PN (bar)	n-φL	D	φD1	φd	L	H	C	T	◇	φV	Weight (Kg)
40	10-16	16	4-φ19	150	110	84	140	242	19	3	S12	180	9
50	10-16	16	4-φ19	165	125	99	150	242	19	3	S12	180	10
65	10-16	16	4-φ19	185	145	118	170	270	19	3	S12	180	19
80	10-16	16	8-φ19	200	160	132	180	305	19	3	S14	250	22
100	10-16	16	8-φ19	220	180	156	190	320	19	3	S14	250	30
125	10-16	16	8-φ19	250	210	184	200	385	19	3	S17	300	35
150	10-16	16	8-φ23	285	240	211	210	405	19	3	S17	300	48
200	10	10	8-φ23	340	295	266	230	508	20	3	S17	300	67
	16	16	12-φ23		295	266							67
250	10	10	12-φ23	405	350	319	250	596	22	3	S24	450	98
	16	16	12-φ28		355	319							98
300	10	10	12-φ23	460	400	370	270	685	24.5	4	S24	450	134
	16	16	12-φ28		410	370							134



www.orseal.com



01204 474300

Orseal Ltd, Lynstock Way, Lostock, Bolton, Lancashire, BL6 4QR