



the valve specialists

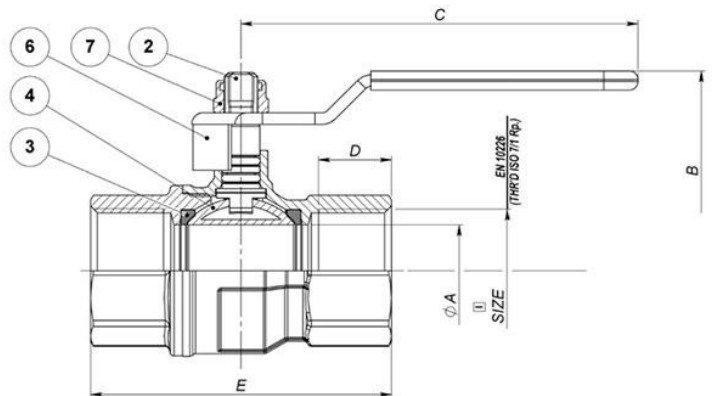
WRAS Ball Valves ORWBV MF



Description

- Male to Female Threads
- Ideal to use with hot and cold domestic water applications, compressed air, oils and hydrocarbons in general
- Firesafe
- Approvals WRAS, RoHS 2011/65/CE

No	Description	Material
1	Body	CW617N (EGM.001)
2	Pre-assembled Stem	Various
	Stem	CW614N (EGM.002)
	O-rings	NBR
	Thrust Washer	PTFE
3	Ball Gasket	PTFE
4	Ball Gaskets	CW617N (EGM.001)
5	End-Adapter	CW617N (EGM.001)
6	Red Lever	Steel
7	Self-Locking Nut	Steel



Size	DN	A	B	C	D	E	SW	PN
1/4"	8	8	34.5	65	11	44.5	17	50
3/8"	10	10	35.5	65	11.4	47	21	50
1/2"	15	15	40	75	15	56.5	24	25
3/4"	20	20	42	90	16.3	64	30	25
1"	25	25	52	105	19.1	80	37	25
1" 1/4	32	32	59	105	21.4	91.5	46	25
1" 1/2	40	40	67.5	120	21.4	101	53	25
2"	50	50	77.5	140	25.7	123.5	65	25

Orseal Ltd, Lynstock Way, Lostock, Bolton, BL6 4QR

T: +44 (0)1204474300 / F: +44 (0)1204474347

E: sales@orseal.com

W: www.orseal.com