



the valve specialists

A-690T Swing Check Valve

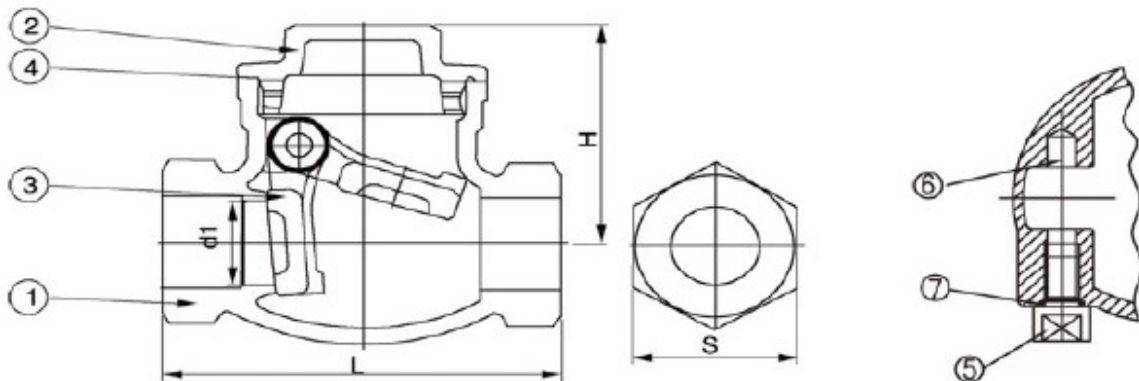


Key Features

- Class 200, PN16, PSI200
- Threaded ends conform to ANSI B 2.1, BS 21-1973, DIN 259/2999, ISO 228
- Integral seat

No.	Description	Material
1	Body	CF8M
2	Cap	CF8M
3	Disc	CF8M
4	Joint Gasket	PTFE
5	Plug	SS316
6	Hanger Pin	SS316
7	Thrust Washer	PTFE

Size	L	H	D1	S
1/2"	15	41	65	26
3/4"	20	49.5	80	31
1"	25	55	92	39
1.1/4"	32	62.5	105	50
1.1/2"	40	70.5	120	58
2"	50	79.5	140	68
2.1/2"	65	93	180	87
3"	80	104	200	102



Orseal Ltd, Lynstock Way, Lostock, Bolton, BL6 4QR

T: +44 (0)1204474300 / F: +44 (0)1204474347

E: sales@orseal.com

W: www.orseal.com